

## 485 TRANSPORTATION SQUADRON



### MISSION

### LINEAGE

Headquarters, 85 Transportation Group, Depot constituted 7 Jan 1952

Activated 16 Mar 1952

Inactivated, 1 Dec 1953

Redesignated 485 Transportation Squadron, 19 Dec 1983

Activated, 1 Aug 1984

Inactivated

### STATIONS

Erding AB, Germany, 16 Mar 1952-1 Dec 1953

Florennes AB, Belgium, 1 Aug 1984

### ASSIGNMENTS

85 Transportation Group, Depot, 16 Mar 1952-1 Dec 1953.

485 Tactical Missile Wing, 1 Aug 1984

### COMMANDERS

Maj Isaiah Pugh

### HONORS

**Service Streamers**

**Campaign Streamers**

**Armed Forces Expeditionary Streamers**

## Decorations

### EMBLEM

Blue and yellow are the Air Force colors. Blue alludes to the sky, the primary theater of Air Force operations. Yellow refers to the sun and excellence required of Air Force personnel. The wheel central is the central element of the emblem which a traditional symbol for transportation. The winged container representing cargo and the key are symbolic of the units transportation mission. The tomahawk is a part of the emblem of the parent unit design. The boar's head denotes the Ardennes Forest near which the unit was activated.

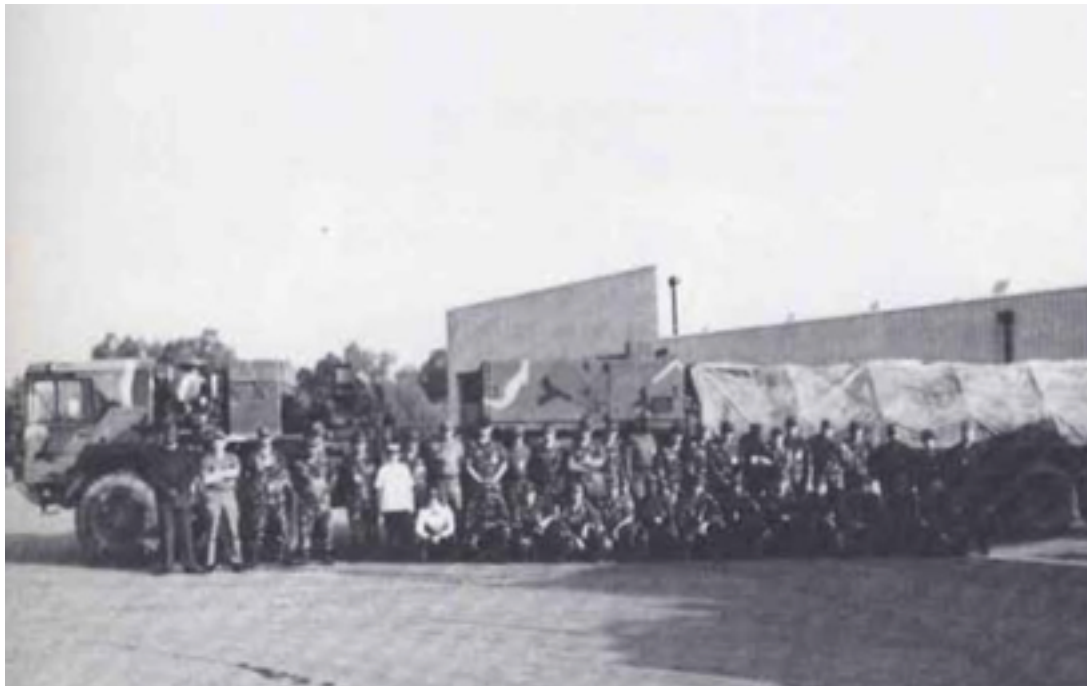
### MOTTO

Always Ready

### NICKNAME

### OPERATIONS

Served as headquarters component of 85th Transportation Group. Depot, a part of the 85th Air Depot Wing, Twelfth Air Force, USAFE, Mar 1952-Dec 1953



---

USAF Unit Histories  
Created: 26 Aug 2011  
Updated: 27 Nov 2012

#### Sources

Air Force Historical Research Agency. U.S. Air Force. Maxwell AFB, AL.  
Unit yearbook. *485 Tactical Missile Wing*.